

XIIX
CANONS MÉLODIEUX
OU
VI. SONATES EN DUO
A

Flutes Traverses, ou Violons, ou Basses de Viole

Paris 1738

Georg Philipp Telemann
1681 – 1767

Published by Johan Tufvesson.

Non-commercial copying welcome

Revision : 1.2

Sonata I

Vivace

Georg Philipp Telemann (1681–1767)

4

7

9

12

15

18

21

24

27

30

32

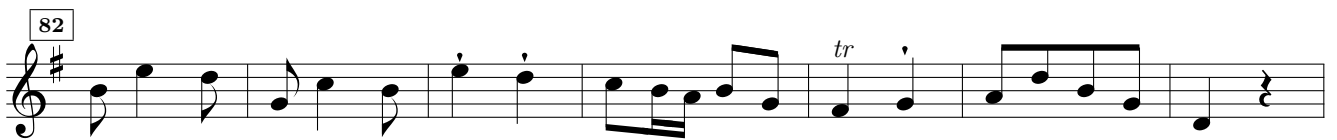
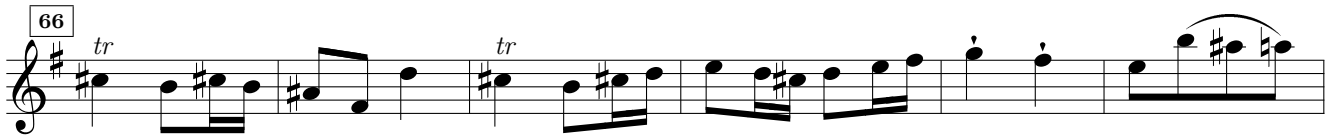
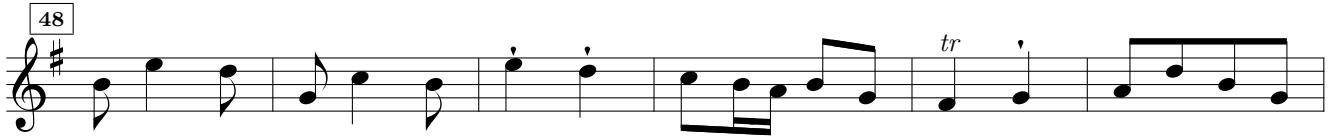
Adagio

Sonata I – Urtext

Musical score for Adagio, measures 1-16. The score is written in treble clef, key of D major (one sharp), and 2/4 time. It features a melodic line with various ornaments and trills. Measure 1 starts with a fermata. Trills (tr) are present in measures 4, 8, 12, and 16. The piece concludes with a double bar line at the end of measure 16.

Allegro

Musical score for Allegro, measures 1-30. The score is written in treble clef, key of D major (one sharp), and 2/4 time. It features a more rhythmic and melodic line with trills. Measure 1 starts with a fermata. Trills (tr) are present in measures 1, 13, 24, and 30. The piece concludes with a double bar line at the end of measure 30.



Sonata II

Georg Philipp Telemann (1681–1767)

Presto

6 *tr*

11

15 *tr*

20 *tr*

24 *tr*

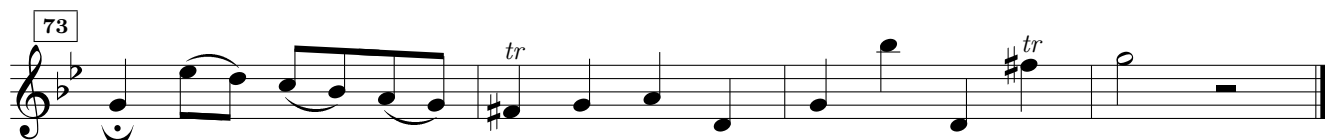
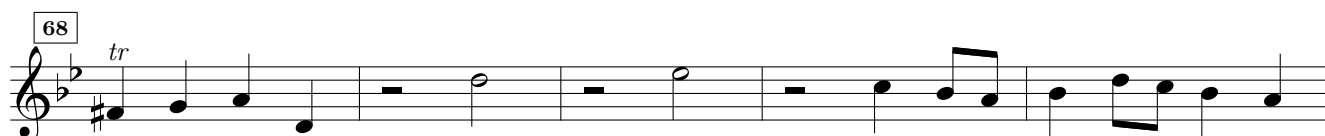
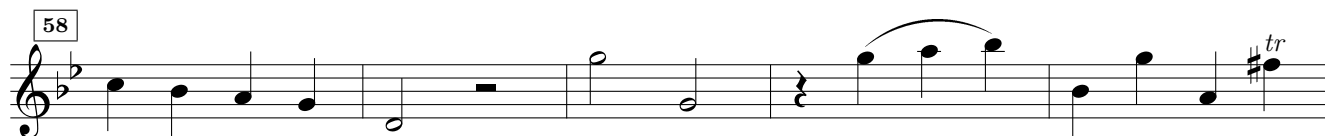
29 *tr* *tr*

34 *tr*

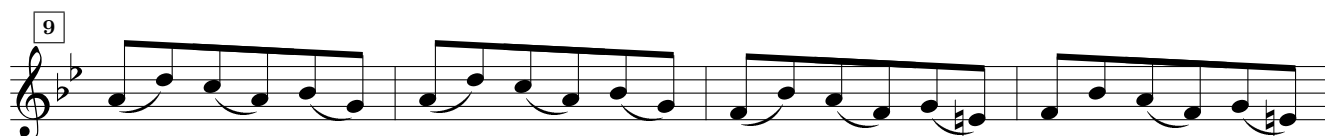
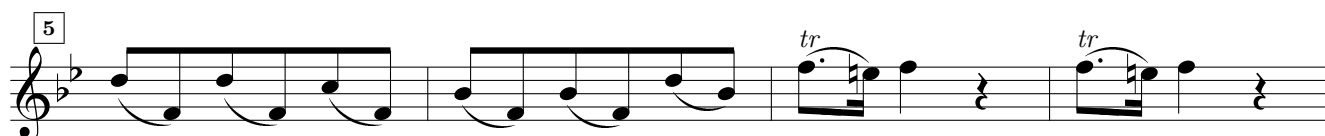
39

44

48 *tr*



Largo



Vivace

Sonata II – Urtext

8

15

21

27

34

40

47

54

61

68

Sonata III

Georg Philipp Telemann (1681-1767)

Spirituoso

Musical score for Sonata III by Georg Philipp Telemann, Spiruoso. The score is in G major and common time, consisting of 44 measures. It features a single melodic line with various ornaments, including trills (tr) and mordents, and rests. The piece is marked 'Spiruoso'.

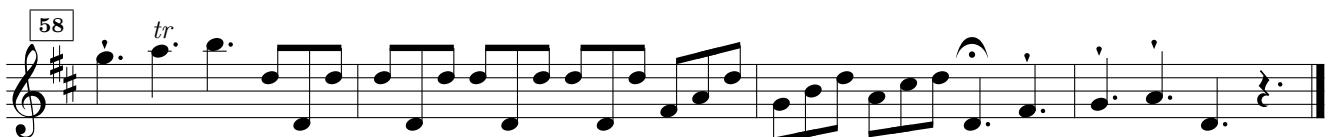
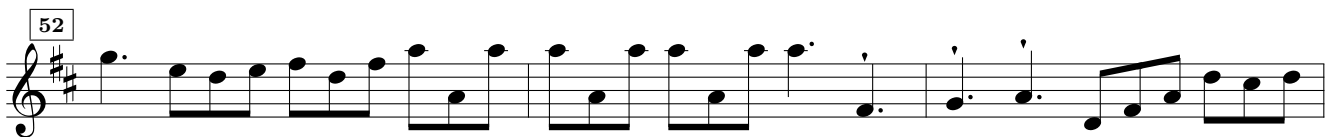
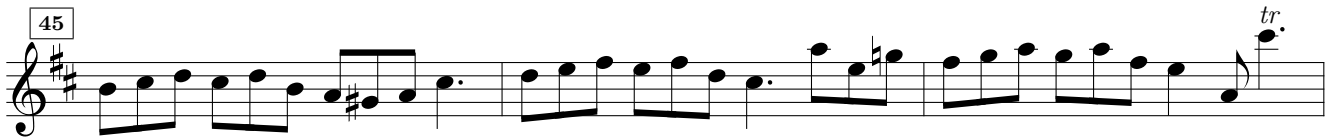
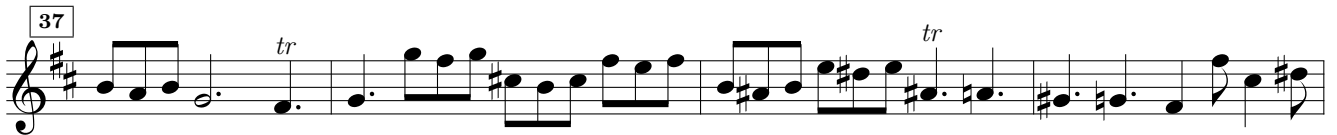
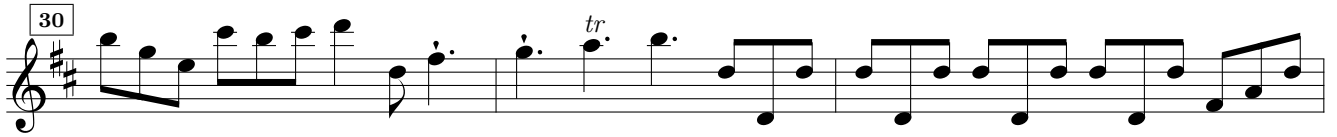
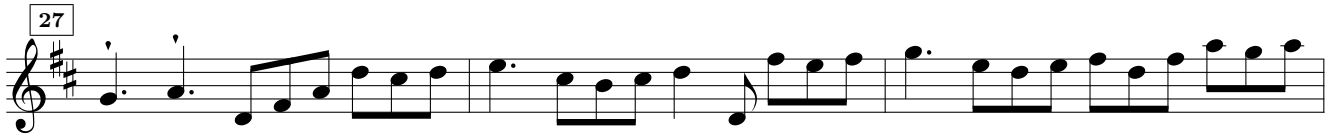
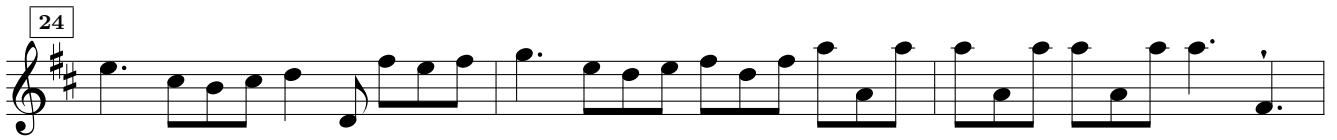
Larghetto

Sonata III - Urtext

Musical score for the first section, *Larghetto*. The score consists of four staves of music. The first staff starts with a treble clef, a key signature of one sharp (F#), and a 6/8 time signature. It contains several measures with trills (tr) and a section symbol (§). The second staff begins at measure 6. The third staff begins at measure 11. The fourth staff begins at measure 16 and ends with a double bar line.

Allegro assai

Musical score for the second section, *Allegro assai*. The score consists of eight staves of music. The first staff starts with a treble clef, a key signature of one sharp (F#), and a 12/8 time signature. It contains several measures with a section symbol (§). The second staff begins at measure 4. The third staff begins at measure 7. The fourth staff begins at measure 10. The fifth staff begins at measure 14. The sixth staff begins at measure 18. The seventh staff begins at measure 21 and ends with a double bar line.



Sonata IV

Vivace ma moderato

Georg Philipp Telemann (1681-1767)

The image displays a single-staff musical score for a piece titled 'Sonata IV' by Georg Philipp Telemann. The score is written in treble clef with a key signature of one flat (B-flat) and a time signature of 3/4. The tempo is indicated as 'Vivace ma moderato'. The score consists of 54 measures, with measure numbers 6, 10, 14, 19, 24, 29, 34, 39, 44, 49, and 54 marked at the beginning of their respective lines. The music features a variety of rhythmic patterns, including eighth and sixteenth notes, often beamed together. Trills (tr) are used as ornaments in several measures, notably at measures 6, 14, 29, 49, and 54. The piece concludes with a final cadence in measure 54.

Piaceuole non Largo *Sonata IV - Urtext*

3

6

9

11

14

17

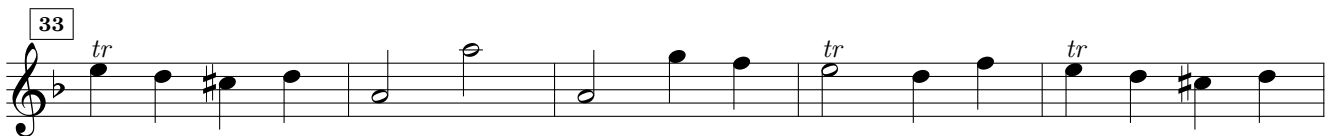
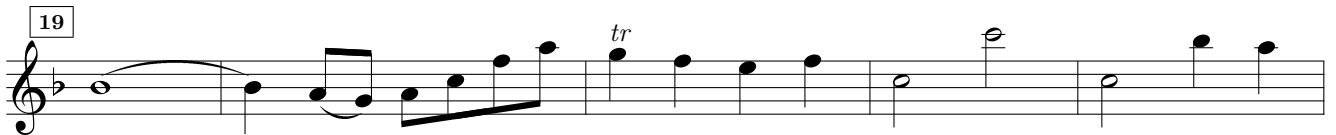
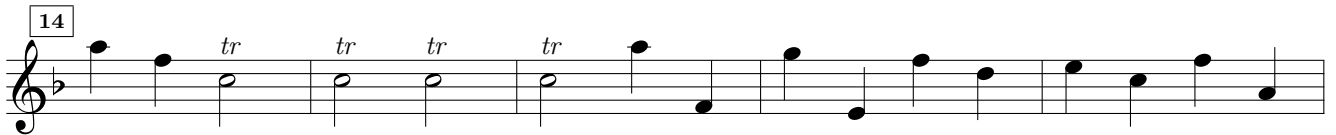
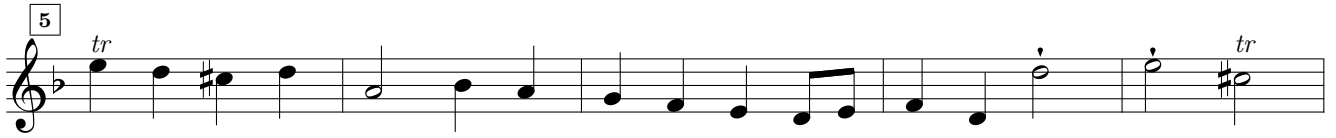
19

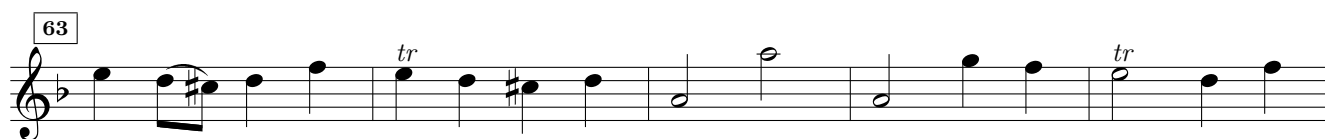
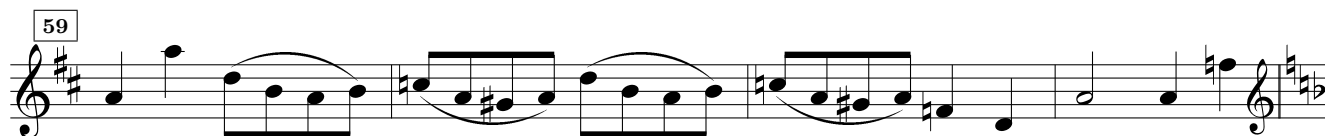
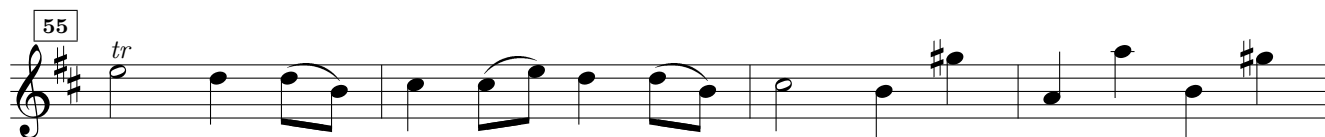
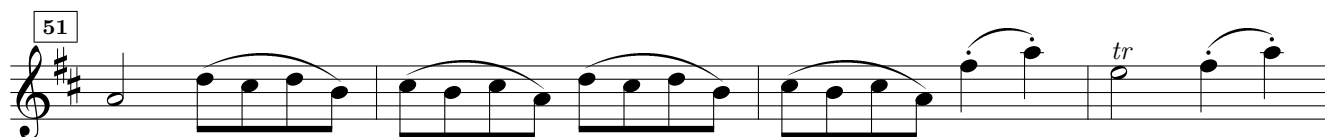
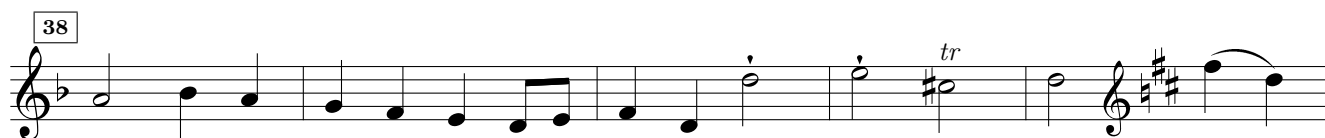
22

24

26

Presto





Sonata V - Urtext
Sonata V

Vivace

Georg Philipp Telemann (1681-1767)

6

12

18

24

30

36

42

48

53

58

64

71

76

82

88

94

Cantabile

6

11

16

21

26

31

Schentando

Sonata V - Urtext

4

8

11

15

19

23

27

31

34

38

42

47

51

55

59

62

66

70

74

78

82

86

89

Sonata VI

Georg Philipp Telemann (1681-1767)

Vivace

4

7

10

13

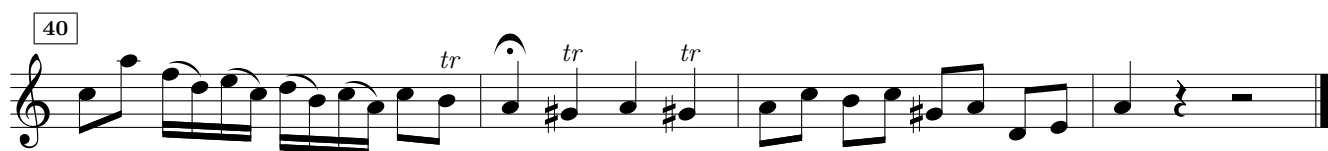
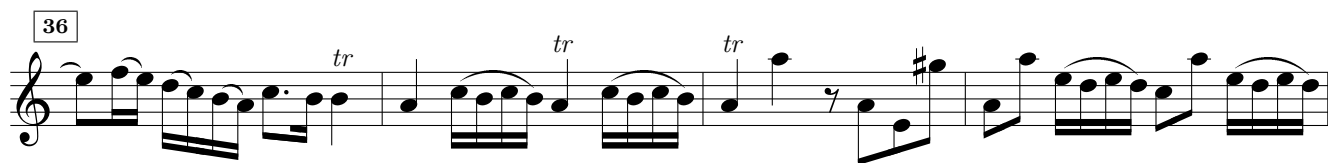
17

20

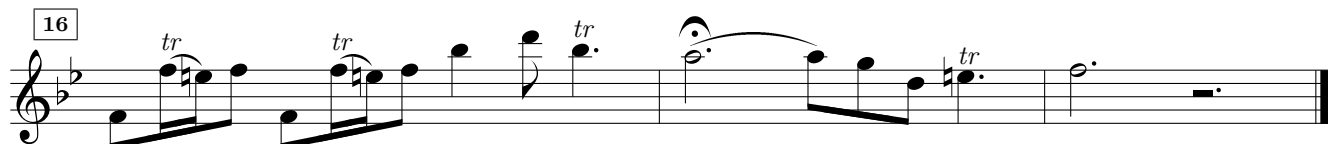
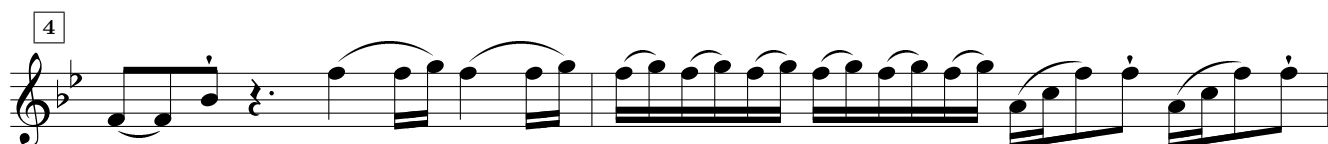
23

26

29



Soave



Allegro assai

Sonata VI - Urtext

Musical score for Sonata VI - Urtext, page 20. The score is in 3/8 time and features a melodic line with various ornaments and rests. The key signature is one sharp (F#).

Measures 1-6: Melodic line starting with a quarter note, followed by eighth notes, and a trill (tr) on the fifth measure.

Measure 7: Boxed measure number 7. Melodic line with eighth notes and a trill (tr) on the fifth measure.

Measures 13-19: Boxed measure number 13. Melodic line with eighth notes and trills (tr) on measures 13, 15, and 19.

Measures 20-25: Boxed measure number 20. Melodic line with eighth notes and trills (tr) on measures 20, 22, and 25.

Measures 26-32: Boxed measure number 26. Melodic line with eighth notes and trills (tr) on measures 26, 28, 30, and 32.

Measures 33-38: Boxed measure number 33. Melodic line with eighth notes and trills (tr) on measures 33, 35, 37, and 38.

Measures 39-44: Boxed measure number 39. Melodic line with eighth notes and trills (tr) on measures 39, 41, 43, and 44.

Measures 45-50: Boxed measure number 45. Melodic line with eighth notes and trills (tr) on measures 45, 47, 49, and 50.

Measures 51-57: Boxed measure number 51. Melodic line with eighth notes and trills (tr) on measures 51, 53, 55, and 57.

Measures 58-64: Boxed measure number 58. Melodic line with eighth notes and trills (tr) on measures 58, 60, 62, and 64.

65

72

78

85

92

99 *tr.*

106

113

121 *tr.*

128 *tr.*

134